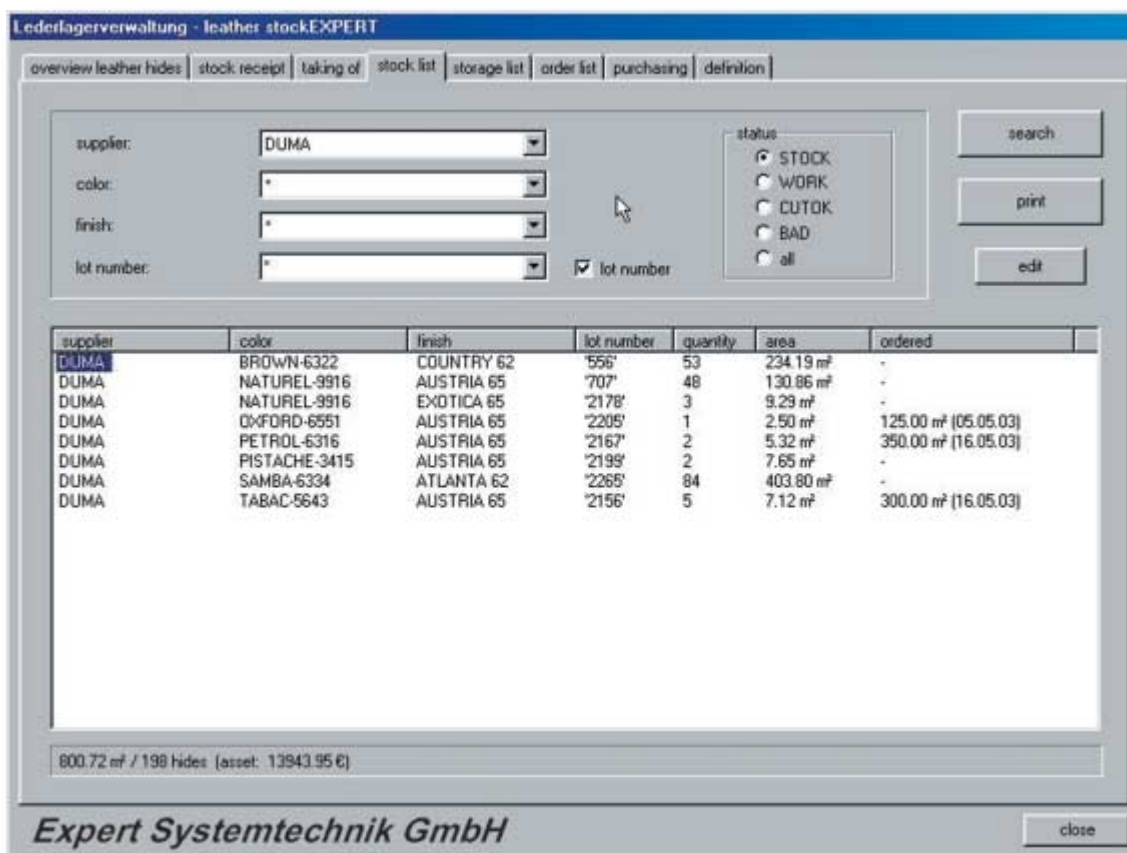




# leather stockEXPERT

**The efficient leather stock management for each company size**

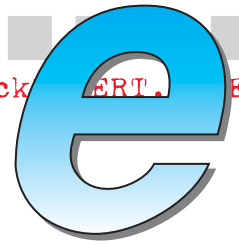


**Use all the advantages that leather stockEXPERT offers for leather stock management**

## The leather stockEXPERT...

- ◆ automates your leather stock management
- ◆ optimizes the organization of work flow of your stock
- ◆ offers efficient support for physical stocktaking
- ◆ controls continuously your leather stock values
- ◆ makes the allocation of leather to orders more flexible
- ◆ informs about leather consumption
- ◆ can be embedded easily in your current management system

**know how**



## **Use leather stockEXPERT to become more profitable in your leather stock**

### **Use all the advantages of the optimized leather stock management**

leather stockEXPERT offers you all the necessary stock data in clearly arranged overviews. The simple and continuous collection of data of received leather, issued and returned leather allows you a complete and always up-to-date control of your leather stock and its values. The data of issued leather is collected according to orders and cutting persons which allows you to find out the corresponding leather consumption. On account of the barcode-labelling of all hides you can easily observe their movement through the production process.

### **Optimize the organization of your stock work flow**

leather stockEXPERT manages the leather storage places you fixed in the system. You select certain leather colors and/or types in the stockEXPERT. Simultaneously you locate and/or establish the exact storage places. This allows you a smooth and fast access to the hides. Cost-intensive remaining leather stocks are found out quickly and can be avoided easily.

### **Use leather stockEXPERT data as the base for stocktaking**

leather stockEXPERT provides you with stock lists sorted according to leather colors and types. These lists can be used for physical stocktaking works. The complete control of physical stocks allows you to discover the divergences between computerized and physical stocks and its values. As each hide is supplied with a barcode you can easily identify the missing hides.

### **Control your leather stock values continuously**

leather stockEXPERT informs you at any time about your complete stock values. Data is available for the complete stock as well as sorted by e.g. storage places, colors, leather types, lot numbers and colour bath numbers.

### **Make the allocation of hides to orders more flexible**

leather stockEXPERT informs you about freely disposable leather stocks as well as about the ordered leather quantities and planned delivery dates. Therefore the availability of leather becomes transparent and the allocation of leather to orders is facilitated.

### **Control your leather consumption**

Issued and returned leather hides are related to cutting persons and orders. This allows you a complete control of leather consumption. In case of divergences to average consumptions you can intervene at short-term. leather stockEXPERT provides you with leather consumption data which you take as a basis for production evaluation and order pre-calculation.

### **Embed leather stockEXPERT in your current management system**

leather stockEXPERT can be used as an efficient stand-alone solution and can be installed on current PCs. Interfaces to production planning and control systems or other management systems can be installed.

### **Expert Systemtechnik GmbH**

Brönninghauser Straße 35e, D-33729 Bielefeld, Germany, Tel.: +49 5 21 / 9 59 67-0,  
Fax.: +49 5 21 / 9 59 67-10, [www.expertsystemtechnik.de](http://www.expertsystemtechnik.de), e-mail: [info@expertsystemtechnik.de](mailto:info@expertsystemtechnik.de)